



PEKIN FIRE STATIONS

PEKIN FIRE DEPARTMENT AT A GLANCE

- The mission of the Pekin Fire Department is to provide professional all-hazards emergency response and to enhance the quality of life of our residents, employees, and visitors through comprehensive fire prevention, code enforcement, public education, and emergency management.
- **12 personnel** on duty, plus the Battalion Chief
- **6400+ calls for service** in 2022, increased from 3700 in 2007
- Firefighting, EMS, technical rescue, hazmat, public service of any kind
- **3 Fire Stations**, built in the 60s and 70s, with facilities that do not meet the needs of the modern fire service, and lack capacity for the future
- **24x7** use of facilities compounds the age of the buildings





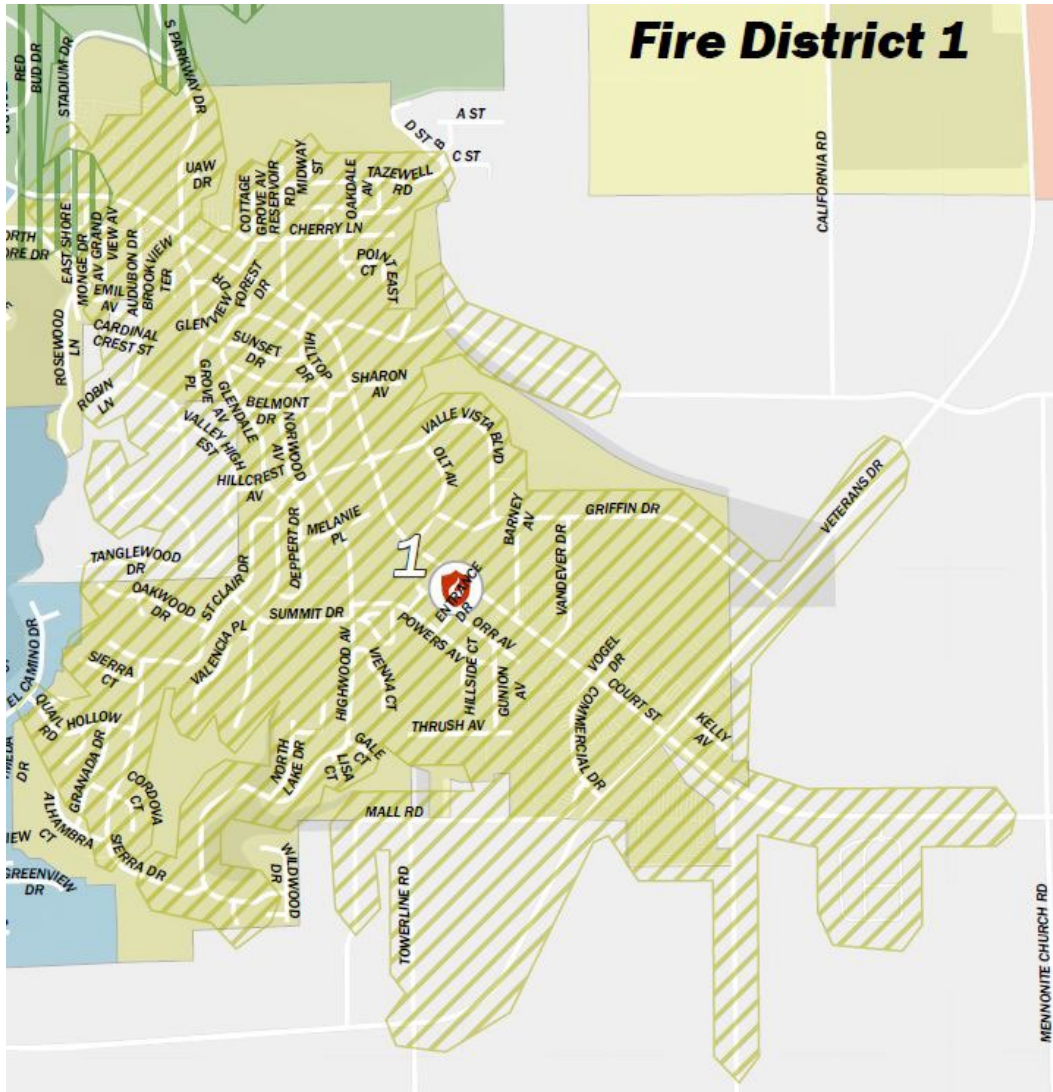
FIRE STATION I

- 3232 Court Street
- Build Date - 1975
- Ladder 1 – 3 personnel
- Fire Chief and Administration, Fire Prevention, Battalion Chief
- Reserve equipment
- Originally opened as Fire Station 4 – due to the former Central Station being open.

FIRE STATION I CONDITIONS

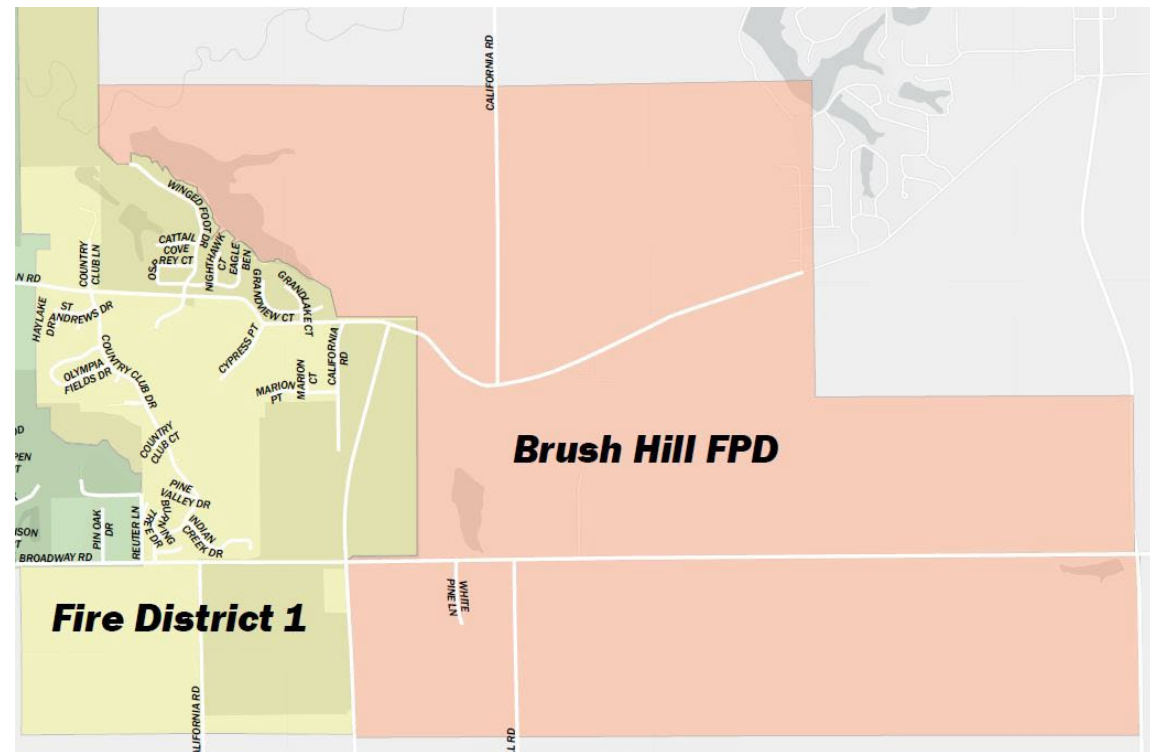


- Our newest facility – however it lacks the design features that modern Fire Stations require, such as proper turnout gear storage, decontamination, and general functionality such as adequate bathroom & shower space
- **Recently Completed Work** – HVAC upgrades, bunk room remodel, garage door repairs, window repairs, office renovations, parking lot drain cover (falling in), upgraded lighting and ceiling tiles, cleaning of dewatering system
- **Work In Progress** – Fire Alarm system, storage building, driveway and parking lot reconstruction beginning soon
- **Future Work Needed** – Structural analysis & potential repairs, continued lighting and cosmetic upgrades, regular maintenance, reconfiguration of internal rooms to modernize the station.
- Station I is **suitable for renovation** to bring it up to current fire station standards.



STATION I DISTRICT

- Station I currently covers the entire east side of the City of Pekin, including Broadway east to Springfield Road.
- The areas on Broadway, and to the east and north of there, are further than 1.5 road miles from the station.
- Combination of residential and commercial areas.





FIRE STATION 2

- 1000 N 14th Street
- Build Date – 1962
- Engine 2 – 2 personnel
- Rescue 2 – 2 personnel
- Originally intended to provide supplement to Central Station response on the City's north side

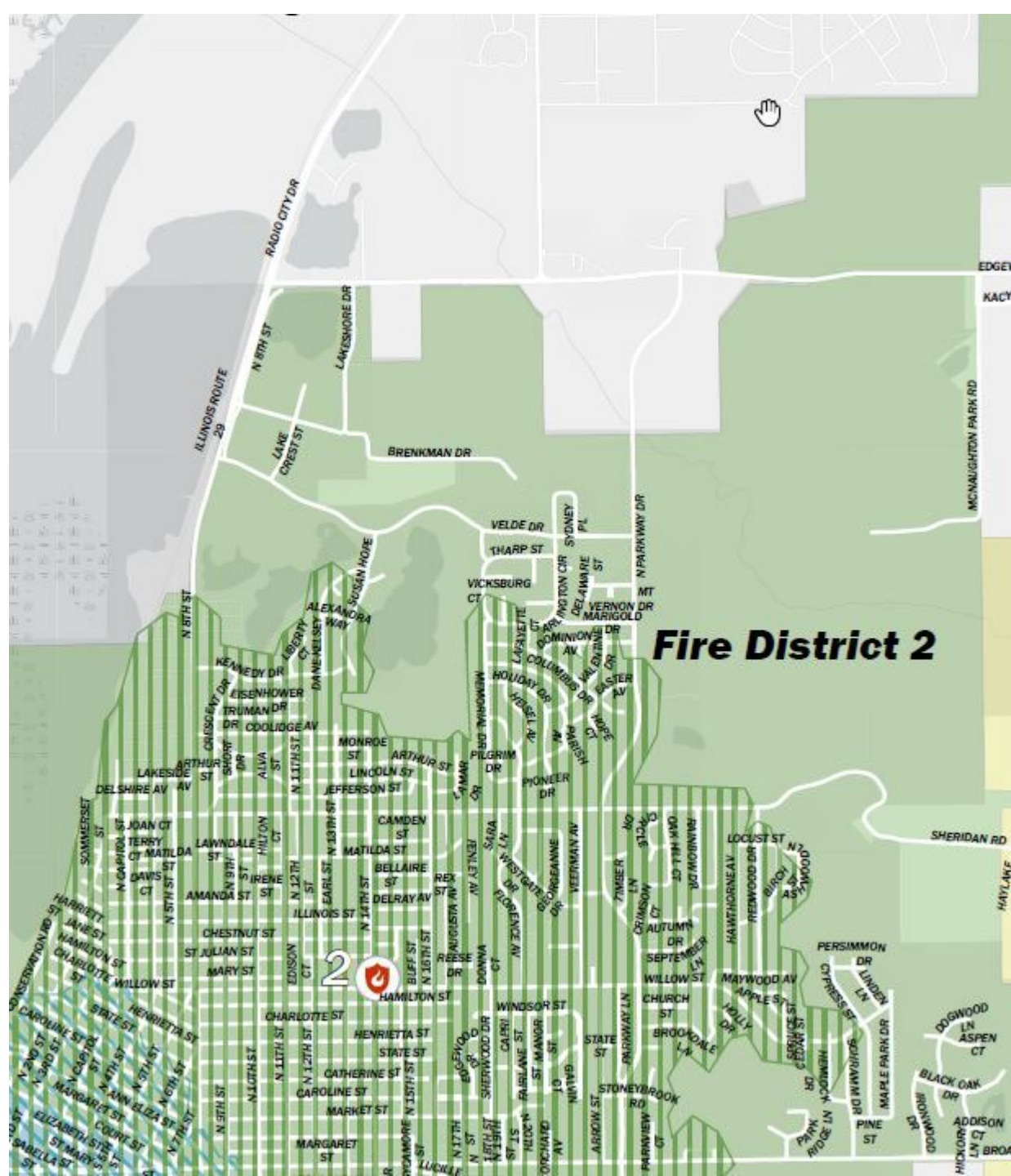
FIRE STATION 2 CONDITIONS

- **Station 2** was designed for the needs of the 1960s.
- Masonry construction with no insulation.
- Apparatus size has exceeded the capacity of the station.
- Living quarters are inadequate.
- Lacks any features of a modern fire station: Turnout gear is exposed to sunlight and not properly ventilated, no decontamination area, bunk rooms open directly into the garage space.
- **Recently Completed Work** – HVAC upgrades, Bunk Rooms remodel, plumbing repairs which resulted in new bathroom and shower tile
- **Future Work Needed** – Regular maintenance to keep the station operational, emergency repairs. Upgrades for the future are not possible due to building design.



STATION 2 DISTRICT

- **Station 2** covers the north side of the City of Pekin.
- Mostly residential.
- Areas to the north and the east are further than 1.5 road miles from the station.





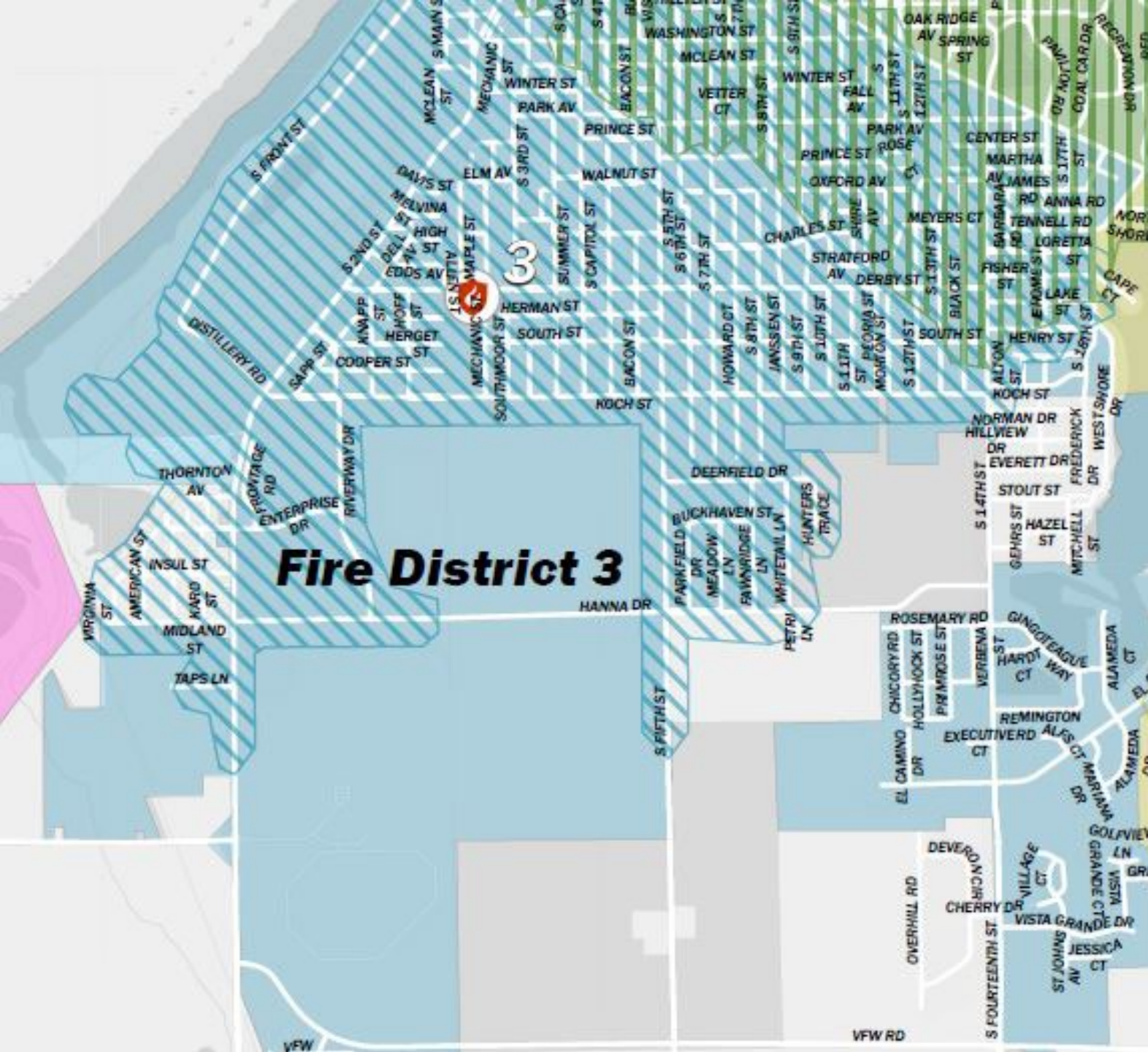
FIRE STATION 3

- 272 Derby Street
- Build Date - 1962.
- Engine 3 – 3 personnel
- Ladder 3 – 2 personnel
- Supplemented Central Station personnel on the City's south side
- Originally included a training tower in back, torn down in the late 1970s.



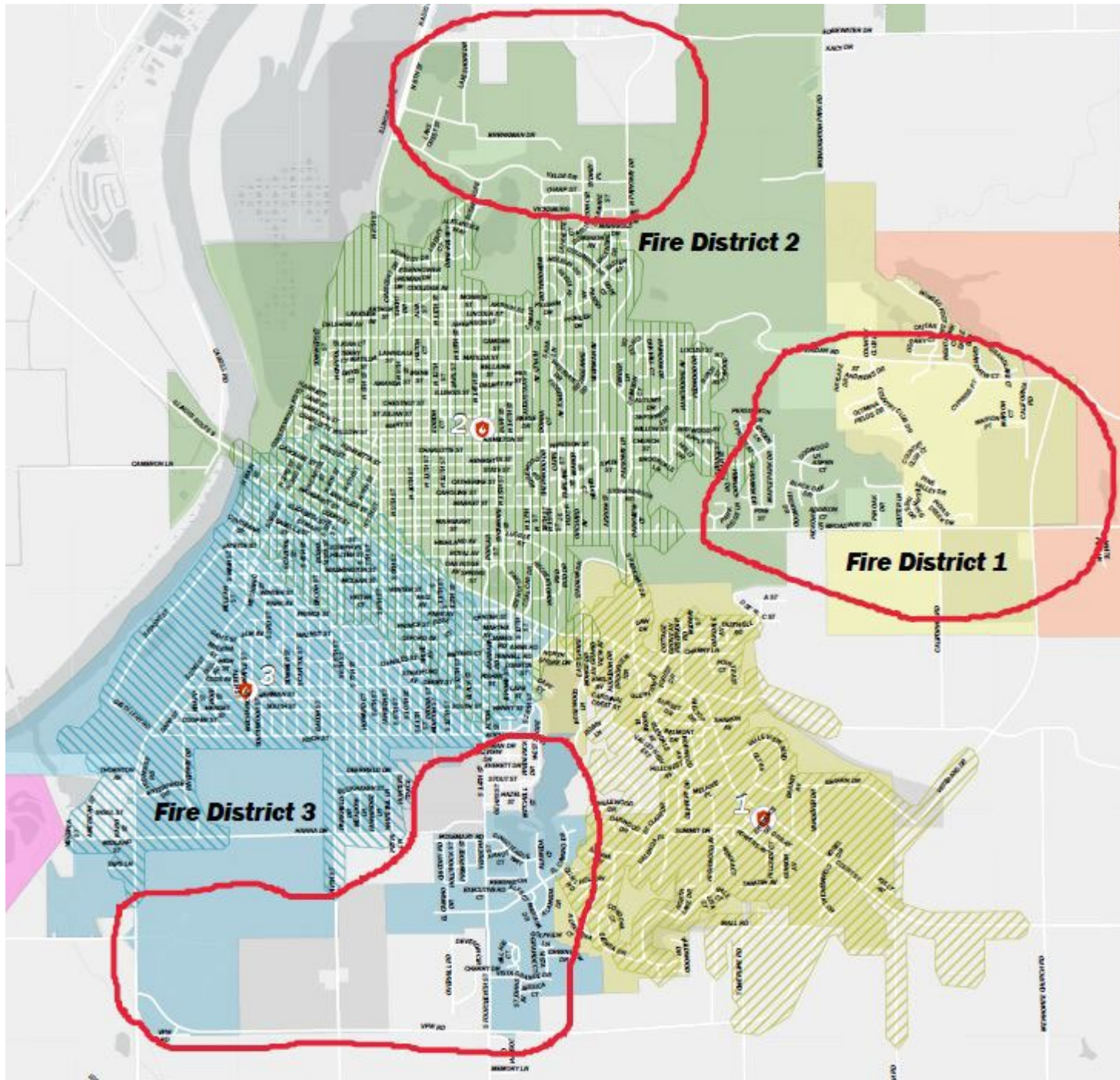
FIRE STATION 3 CONDITIONS

- **Station 3** was designed for the needs of the 1960s.
- Masonry construction with no insulation. Multiple issues with the flat roof. Also has known structural deficiencies that could present long term issues.
- Apparatus size has exceeded the capacity of the station.
- Living quarters are inadequate.
- Lacks any features of a modern fire station: Turnout gear is exposed to sunlight and not properly ventilated, no decontamination area, bunk rooms open directly into the garage space.
- **Recently Completed Work** – HVAC upgrades, Bunk Rooms remodel, plumbing repairs which resulted in new bathroom and shower tile
- **Future Work Needed** – Regular maintenance to keep the station operational, emergency repairs. Upgrades for the future are not possible due to building design.



STATION 3 DISTRICT

- **Station 3** covers the south side of the City of Pekin.
- Combination of residential, commercial, and industrial.
- Areas to the south are further than 1.5 road miles from the station.



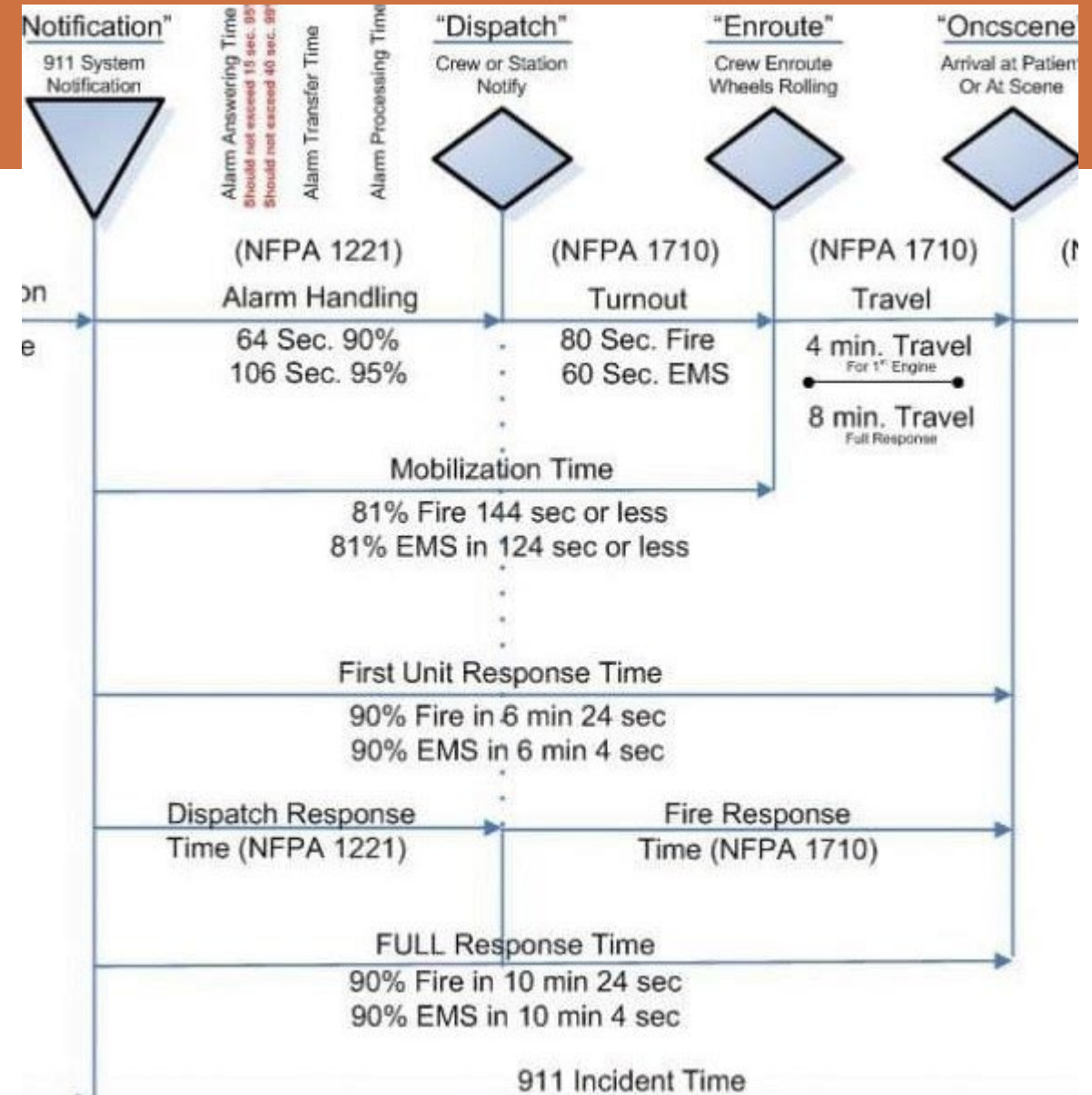
CURRENT COVERAGE MODEL

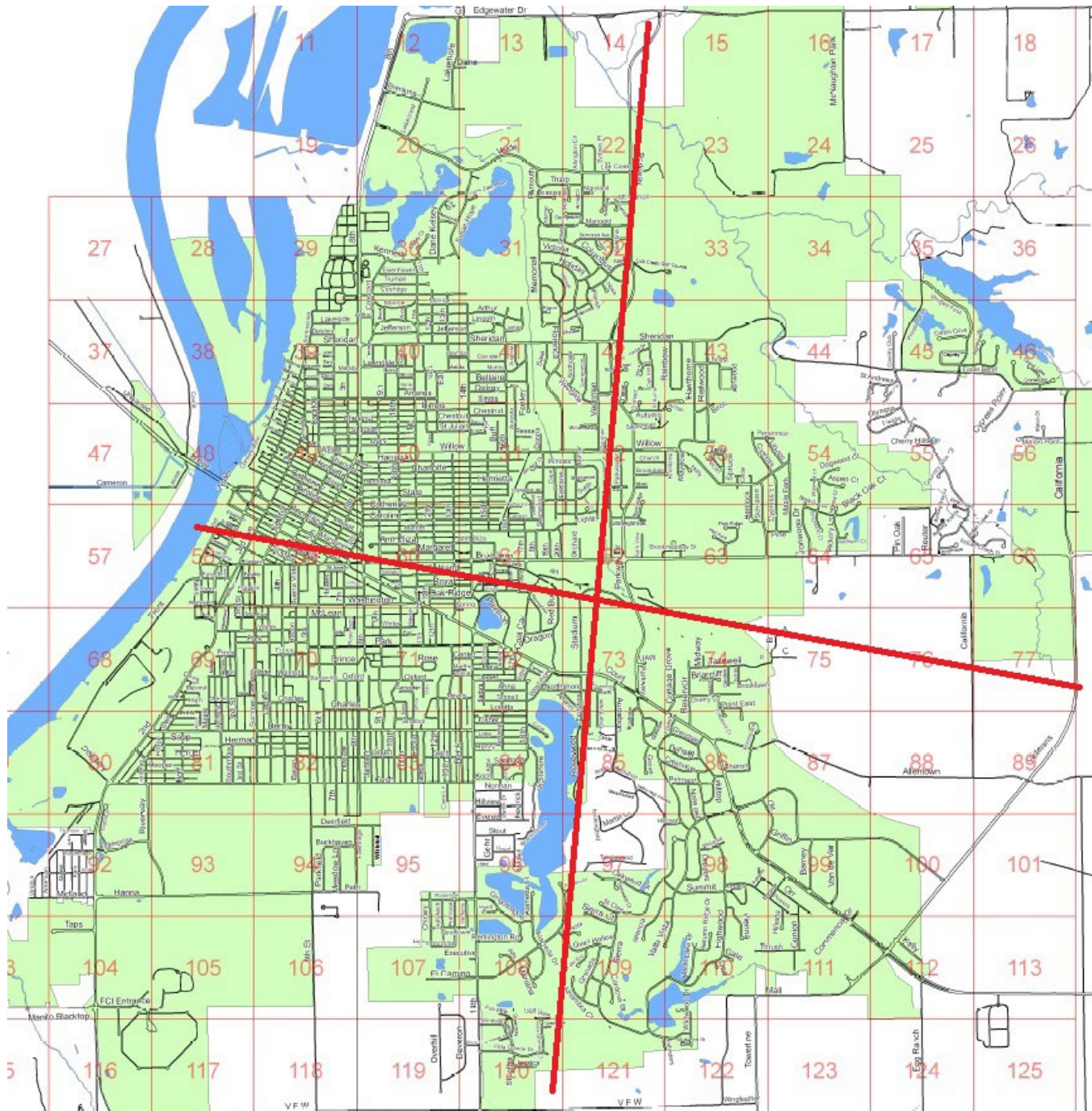
- The **current coverage** model does not properly cover the City of Pekin as it exists today.
- The **growth cells** of the city are also the areas that are currently underserved.
- The **fire stations** are aging, inefficient, inadequate for today's needs, and lack any capacity for future needs.
- **All** of these conclusions are supported by current analysis as well as the City's current Comprehensive Plan from 2006

CURRENT MODEL DEFICIENCIES

DISTANCE DICTATES RESPONSE TIMES

- For full credit in the ISO Fire Suppression Rating Schedule, the fire protection area with residential and commercial properties should have a first-due engine company within 1.5 road miles
- This aligns with the NFPA 1710 response time standard of 4 minutes
- These time performance standards are developed around getting an initial crew on scene for an incident.

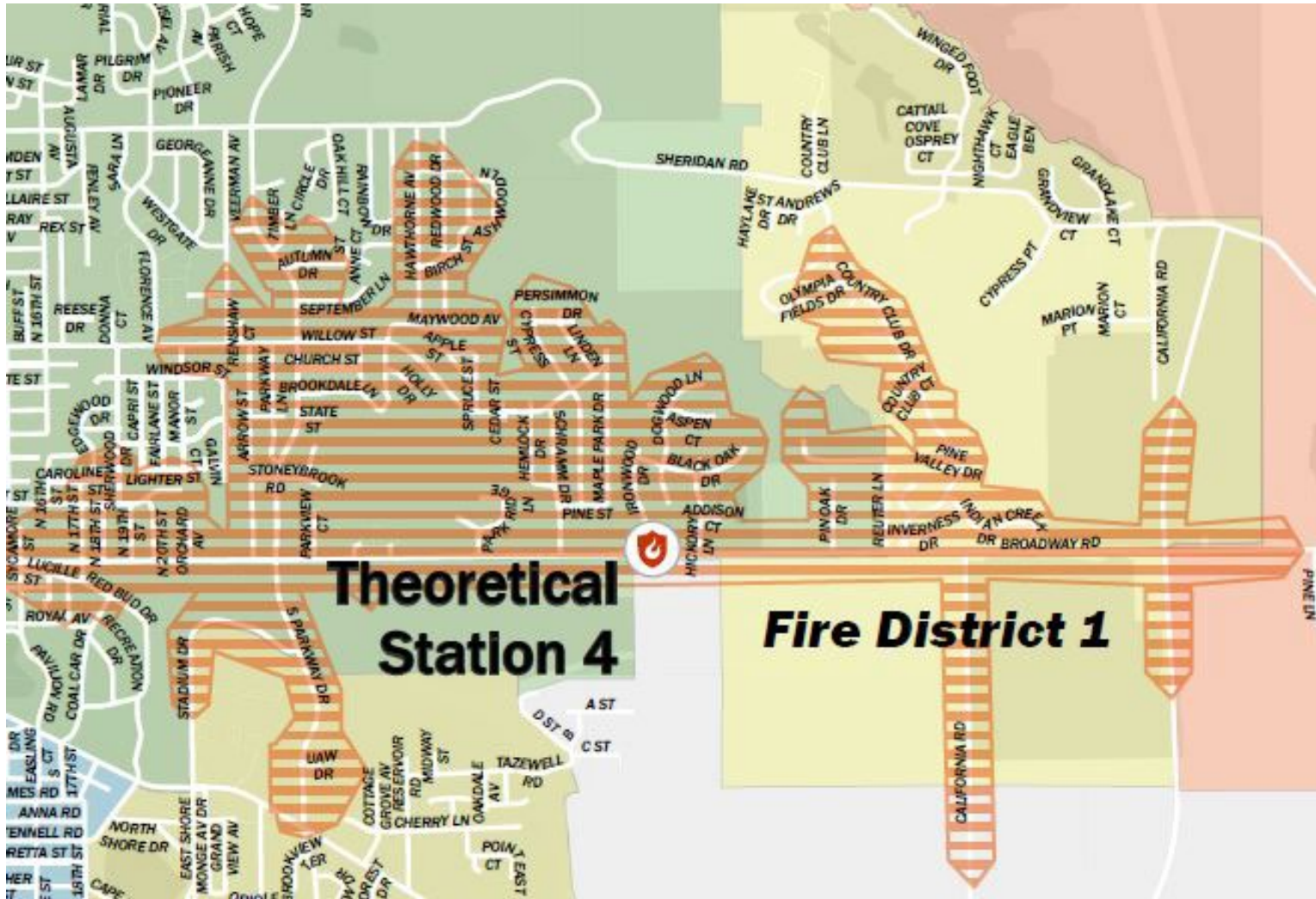




A NEW COVERAGE MODEL

- Think of the City in **Quadrants**, each containing a Fire Station.
- **Map data** supports the idea of locating a station in each quadrant, providing coverage for today and the future.
- The construction of **3 new Fire Stations** provides capacity to address the physical problems as well as the coverage problems.
- The current **Fire Station I** properly covers the SE Quadrant
- Redraw the Fire Districts around the **Quadrant Concept**

PROPOSED STATION 4 LOCATION

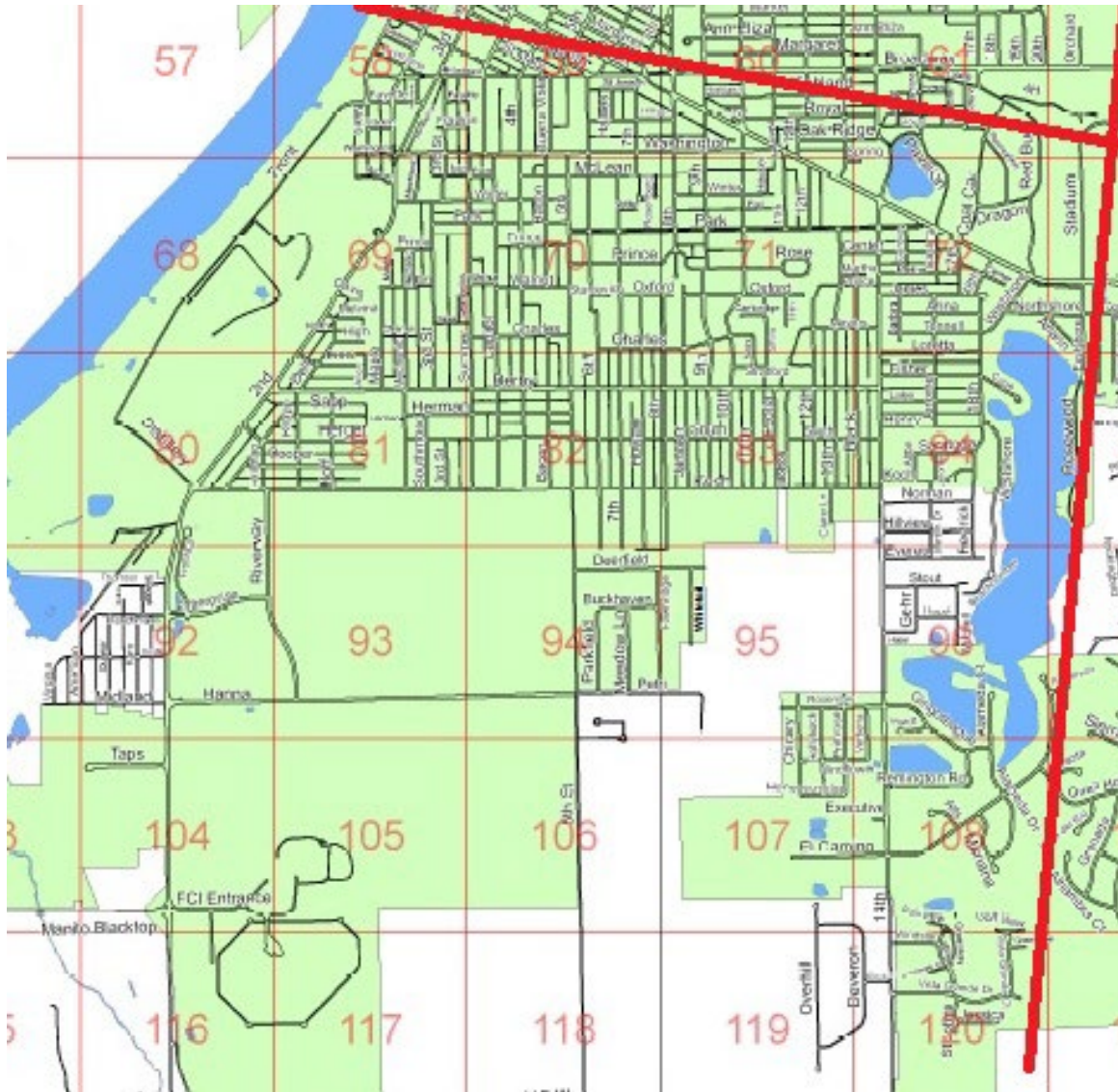


- Located in the **NE Quadrant**, on Broadway Road
- Provides coverage to this currently underserved area
- Future **growth cell** of Pekin
- Broadway provides **excellent access** to other parts of town for City-wide responses.
- Carves out a portion of the current Fire Districts 1 and 2.



POTENTIAL STATION 2 LOCATION

- Located in the **NW Quadrant**.
- Provides improved coverage to the north, including the **growth cell** in this area.
- Provides a **centrally located** response crew for this predominantly residential section of the City.
- Exact location is not secured at this time.



STATION 3 LOCATION

- Located in the **SW Quadrant**
- Difficulty locating this station due to land, roads, etc.
- A couple options are being looked at for this location
- Station would house Fire Department **administration and training classroom**
- Eventual location of a future Training Facility.

4 STATION RESPONSE MODEL

Benefits to the City

- **Safe working environment** for the employees.
- **Increased coverage** of the City's residential areas and future growth cells.
- Off-loading of inefficient facilities which have high maintenance costs.
- Capacity for the future.

Fire Department Operations

- Deploy the 12 on-duty personnel between the 4 stations.
- Minimum of 3 personnel on each apparatus.
- **Evenly distribute** the high-call target hazards within the city
- Capacity for future needs.
- **Safe working environment** for the employees.

QUESTIONS?

